



SHURFLO 4048 HIGH FLOW PUMP

RV FRESH WATER PUMP – PRODUCT TECHNICAL DATA SHEET

OEM: 4048-153-A75
 AFTERMARKET: 4048-153-E75



Multi-fixture RV fresh water pump installation.
 This pump may be used for general fresh water transfer

PUMP DESIGN:

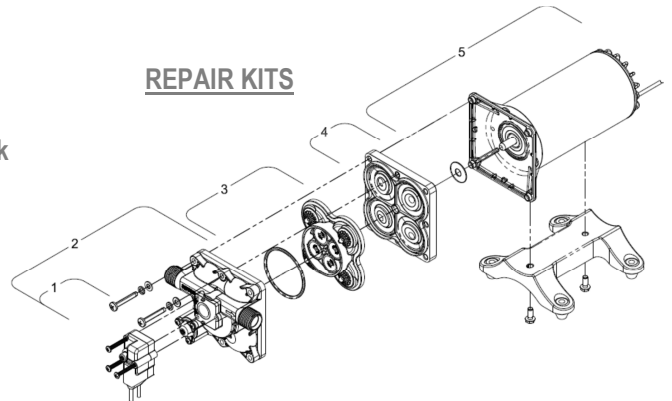
Type: 4 Chamber Diaphragm pump
 Ports: 1/2"-14 NPSM-Male
 Liquid: 130°F [54°C] Max
 Dry-Prime: 6 feet [1.82 M]
 Run Dry: Yes
 Inlet Pressure: 30 PSI Max. [2.06 Bar]

Aftermarket model includes:

- 50 Mesh strainer: swivel straight adapter 1/2-14 NPT (hex-wing nut) X 1/2-14 NPS (male)
- Fittings: swivel straight adapter 1/2-14 NPT (hex-wing nut) x 1/2 barb (Qty. 2)

ELECTRICAL:

Motor: 12V DC Permanent Magnet, Intermittent Duty
 Protection: Thermal Overload, Automatic Restart
 Leads: 14 AWG, 14 3/4" [37 cm] Red +, 13" [33 cm] Black
 Fuse: 15 Amp Recommended
 Control: Shut-Off 55 PSI [3.8 Bar] ± 2 PSI [0.13 Bar]
 Re-start 40 PSI [2.8 Bar] ± 2 PSI [0.13 Bar]
 Maximum By-Pass 65 PSI [4.5 Bar] ± 2 PSI [0.13 Bar]



MATERIALS OF CONSTRUCTION:

Housings: Polypro
 Valves/Seals: EPDM
 Diaphragm: Santoprene
 Hardware: Stainless Steel

| Number | Description | Part Number |
|-----------|-----------------|--------------|
| *1 | Pressure Switch | 94-801-05 |
| *1,2 | Upper Assembly | 94-801-01 |
| 3 | Valve Assembly | 94-800-01 |
| 4 | Drive Assembly | 94-801-02 |
| 5 | Motor | 94-71-001-07 |
| *1,2,3,4 | Pump Head | 94-801-04 |
| Not Shown | Check Valve | 94-800-03 |

AGENCY APPROVALS:

CSA, CE, e-Mark

SHIPPING INFORMATION:

Approx. Net Weight: 7.9 Pounds [3.5 Kg] ea.
 Carton Qty.: 6
 Approx. Carton Weight: 50 Lbs. [22.6 Kg]
 Approx. Carton Size: 24" L X 18" W X 6" H [61cm x 46cm x 15cm]

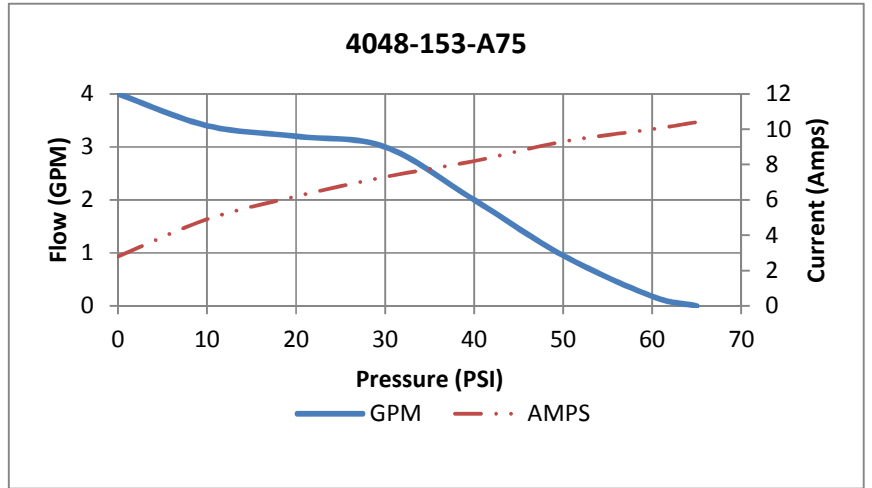
*With preset switch and by-pass adjustment

RELATED DOCUMENTS:

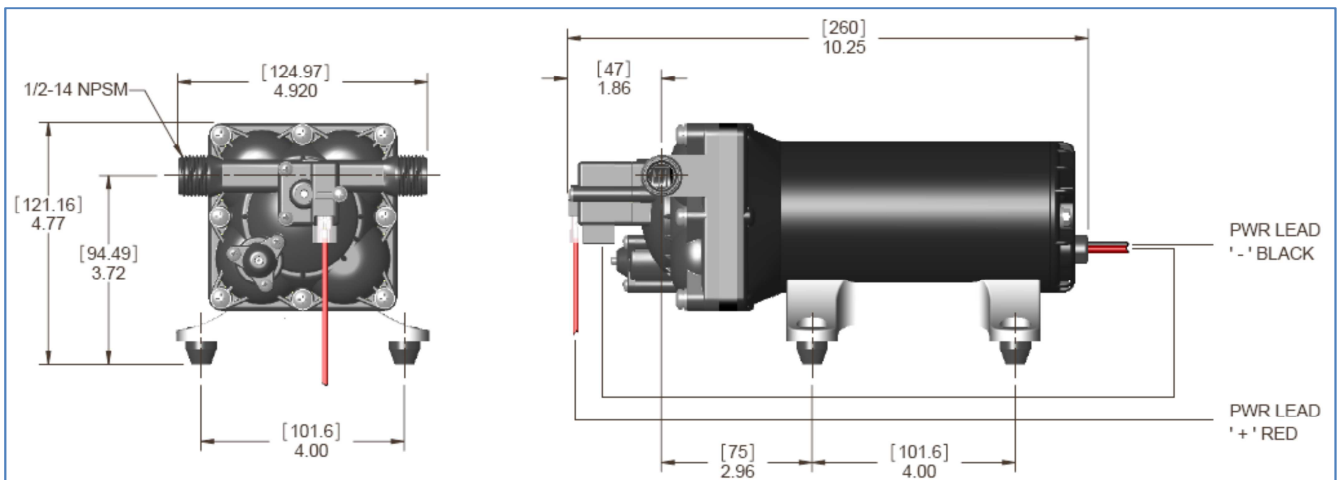
Catalog: MS-030-138
 App Guide Sheet MS-020-005
 Installation Manual: 911-1024
 Aftermarket Warranty: 911-1044

TYPICAL PERFORMANCE AT 12V

| PRESSURE | | FLOW | | CURRENT |
|----------|-----|------|------|---------|
| BAR | PSI | GPM | LPM | AMPS |
| 0 | 0 | 4.0 | 15.1 | 2.8 |
| 0.7 | 10 | 3.4 | 12.8 | 4.9 |
| 1.4 | 20 | 3.2 | 12.1 | 6.2 |
| 2.1 | 30 | 3.0 | 11.3 | 7.3 |
| 2.8 | 40 | 2.0 | 5.79 | 8.2 |
| 3.4 | 50 | 0.95 | 7.57 | 9.3 |
| 4.1 | 60 | 0.18 | 0.68 | 10.0 |
| 4.5 | 65 | 0 | 0 | 10.4 |



DIMENSIONS [mm]



WATER PURIFICATION

3545 Harbor Gateway South, Suite 103, Costa Mesa, CA 92626, (800) 854-3218 www.SHURFLO.com

All Pentair trademarks and logos are owned by Pentair, Inc. All other brand or product names are trademarks or registered marks of their respective owners. Because we are continuously improving our products and services, Pentair reserves the right to change specifications without prior notice. Pentair is an equal opportunity employer.

4048-153-A75 [E75] Rev. 02/14 2012 - 2014 ©Pentair, Inc. All Rights Reserved.